



*The Ultimate Happy Place*

210 TALLAROOK-PYALONG RD  
TALLAROOK VICTORIA 3659  
OURFRIENDSFARM.COM

---

## ONE STOP MAGICAL SPOT!

---



### *LOCATION*

1 hour north of Melbourne and 5 minutes off the Hume hwy, the farm sits on 221 lush acres of rolling hills with 360 degree stunning mountain backdrops



### *CATERING*

Choose from one of our all inclusive wedding packages or work with our team of passionate planners to create a tailored food and beverage menu.



### *ACCOMMODATION*

Stay in one of our 7 newly renovated self contained cabins, vintage caravans, glamping tents or guests can byo tents in the farm campgrounds



### *DECOR & EXTRAS*

Choose from our selection of quality decor, our design team can even custom make props especially for you. We can also help you source local suppliers if you prefer to do your own decor.





# Packages



## CEREMONY ONLY

- Natural leafy lined aisle
- Rustic timber signing table
- Timber seating for 40
- Use of our portable PA System with mic
- Water station
- Entire property for photographs



<b>CEREMONY PACKAGE</b>	<b>\$1100</b>
<b>ADD CHAMPAGNE TOAST</b>	<b>\$20PP</b>
<b>ADD RUSTIC ARCH</b>	<b>\$300</b>

## RECEPTION ONLY

- Wedding reception in the Chalet and Beer Garden until 1am
- Honeymoon suite with a bottle of sparkling wine and breakfast for two
- Two-course sitting or standing dinner or lunch
- Gift table
- 5 hour Silver beverage package
- Coffee, tea and desert
- Your wedding cake for desert

**MINIMUM SPEND \$10,000**  
**20% SURCHARGE ON PUBLIC HOLIDAYS**

*Ask us about our tailored options and extra services to help create your vision*



# Packages



## ONE DAY WEDDING

- One night's accommodation for two, in the "Bridal Suite" on the night of your wedding
- Use of the Nature aisle ceremony site
- Reception in the Chalet and Beer Garden until 1am
- Selection of canapes served for 30 minutes
- 2 course cocktail style dinner or lunch
- Service staff
- Dance floor, stage, in house PA system and microphone for speeches
- Use of farm gardens and props for photos
- Your wedding cake cut by us for desert
- Includes Silver Beverage Package for 5 hours

**\$160 PER HEAD**  
**20% SURCHARGE ON PUBLIC HOLIDAYS**



## WEEKEND WEDDING

- 7 self contained cabins (check in after 2pm) for 2 nights
- BYO camp sites 2 nights
- 2 course farm house dinner in the Chalet on Friday night
- Country breakfast in the Chalet on Saturday and Sunday
- Pre Ceremony grazing station and wine bar in the Beer Garden
- Set up and pack down of outdoor nature ceremony site
- Reception and after party in the Beer Garden and Chalet till 1am
- Silver beverage package for 8 hours
- 2 course sit down or stand up reception dinner
- Recovery breakfast
- Tea, coffee and water station
- Your wedding cake for desert

**MINIMUM SPEND \$20,000**  
**20% SURCHARGE ON PUBLIC HOLIDAYS**





## POST CEREMONY GRAZING

A vintage and rustic table setup with an incredible selection of fine cheeses, cured meats and gourmet dips. Combine that with seasonal fruits, nuts and berries and you've got a sumptuous spread that will leave a lasting impression on all of your guests.

The grazing table is best enjoyed as a light graze with pre dinner drinks. Price is fully inclusive of setup, themed props and packing away.

## ENTRE

6 pieces per person

Gourmet lamb kafta with tzatziki dipping sauce  
Mushroom and mozzarella arancini balls  
Zucchini, halloumi & lemon fritter



## MINI MAINS

Slow cooked pulled pork and apple slaw sliders  
Special gourmet fried rice boat with saucy satay  
chicken skewer

## RECOVERY BREAKFAST

Hot and cold buffet

Bacon, eggs, mushroom, hash browns  
Fruit, cereal, yoghurt, muesli, toast, tea, coffee & juice served in the Clubhouse



# Accommodation Options



## Self contained Cabins

7 Available

- 3 x Deluxe cabins with kitchen bathroom, separate bedroom
- 4 x Standard cabins with bedroom and bathroom.
- Linen provided
- Gorgeous views
- Newly renovated

Bride & groom stay in cabin 1 included in selected packages

**\$220 - \$250 per night**



## Glamping Tents

4mx4m bell tents

10 Available - min 2 nights

- Includes double or queen mattress, bedding and 2 towels
- Set up and pack down

Check out our packages for wine and breaky baskets that can be delivered to your tent.

**\$360 for 2 nights min**



## Vintage Caravans

- Sleeps 2 - 4 people
- Linen and towels provided
- Powered

**\$180 - \$200 per night**

## BYO Camping

- Bring your own camping gear
- Camp showers and toilets
- Powered and non powered sites

**\$30 - \$40 per person**

# Accommodation



SELF CONTAINED CABINS	PRICE PER NIGHT	BEDS	SHOWER	TOILET	AIRCON	KITCHEN
1	\$200	1 X QUEEN + 1 X DOUBLE SOFA	YES	YES	YES	YES
2	\$190	1 X QUEEN	YES	YES	YES	NO
3	\$190	1 X QUEEN	YES	YES	YES	NO
4	\$190	1 X QUEEN	YES	YES	YES	NO
5	\$230	1 X DOUBLE + 3 X SINGLE	YES	YES	YES	YES
6	\$200	4 X SINGLE	YES	YES	YES	NO
7	\$230	1 X DOUBLE + 3 X SINGLE	YES	YES	YES	YES
VINTAGE CARAVANS	PRICE PER NIGHT	BEDS	SHOWER	TOILET	AIRCON	KITCHENETTE
49	\$180	1 X DOUBLE	NO	NO	NO	YES
42	\$200	1 X DOUBLE + 2 X SINGLE	NO	NO	NO	YES
22	\$180	1 X DOUBLE	NO	NO	NO	YES
13	\$220	2 X DOUBLE	NO	NO	NO	YES
12	\$180	1 X DOUBLE	NO	NO	NO	YES
16	180	1 X DOUBLE	NO	NO	NO	YES
9	\$180	1 X DOUBLE	NO	NO	NO	YES
44	\$180	1 X DOUBLE	NO	NO	NO	YES
14	\$200	1 X DOUBLE + 1 X SINGLE	NO	NO	NO	YES
1	\$180	1 X DOUBLE	NO	NO	NO	YES

GLAMPING TENTS ARE \$360 PER 2 NIGHT MIN AND SLEEP 2 PEOPLE -- BYO CAMPING IS \$35 PER PERSON

# Function Spaces

## The Chalet

On the main level the grand Chalet boasts beautiful timber from floor to the high exposed beam ceilings. It comes furnished with antique decor, chesterfield couches and large timber tables with seating for 120 guests.

Complete with a commercial kitchen, an indoor and outdoor bar, club sound system and 1am license, the Chalet is the perfect place to party the night away.



## The Nature Aisle

Walk down our gorgeous aisle by the water, made from all natural materials, and say 'I do' with views of Mt William and Mt Pucka through the valley.

The space comes set up as shown right with a signing table and water station, pop up bar and additional seating is optional.

See our packages for flowers, decor and extra services we can provide.



## The Beer Garden

The Beer Garden is our outdoor bar and seating area in the garden outside the main Chalet.

It comes with tables and chairs, umbrellas, a beverage bar, festoon lighting, music, friendly staff and a million dollar sunset.







*Take advantage of the endless rural, rustic, antique and nature backdrops for exquisite wedding photos*



### ***JANE & MARCO***

"Can't believe somewhere this gorgeous exists just an hour from Melbourne! Thanks for having us, we had such a special weekend <3"





# Drinks

## UNLIMITED PACKAGES

### *Silver Package*

Unlimited house beer, cider, wine, champagne, soft drink, tea and coffee

5 Hours \$66pp - 8 Hours \$88pp

### *Gold Package*

Beer and wine upgrade, champagne, soft drink, tea and coffee

5 Hours \$77pp - 8 Hours \$99pp

### *Platinum Package*

Cocktails, Beer and wine upgrade, house spirits, champagne  
soft drink, tea and coffee

5 Hours \$99pp - 8 Hours \$122pp

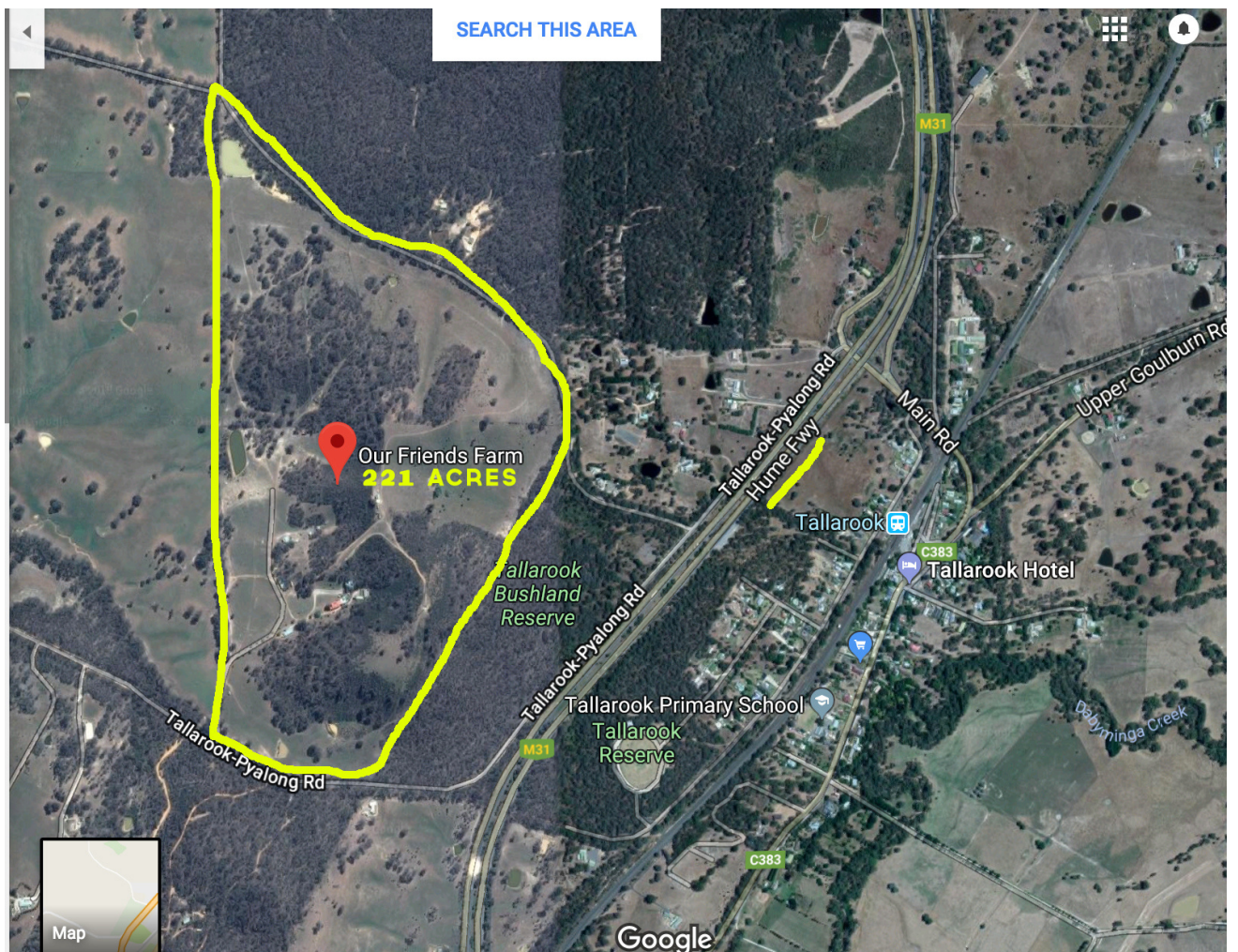
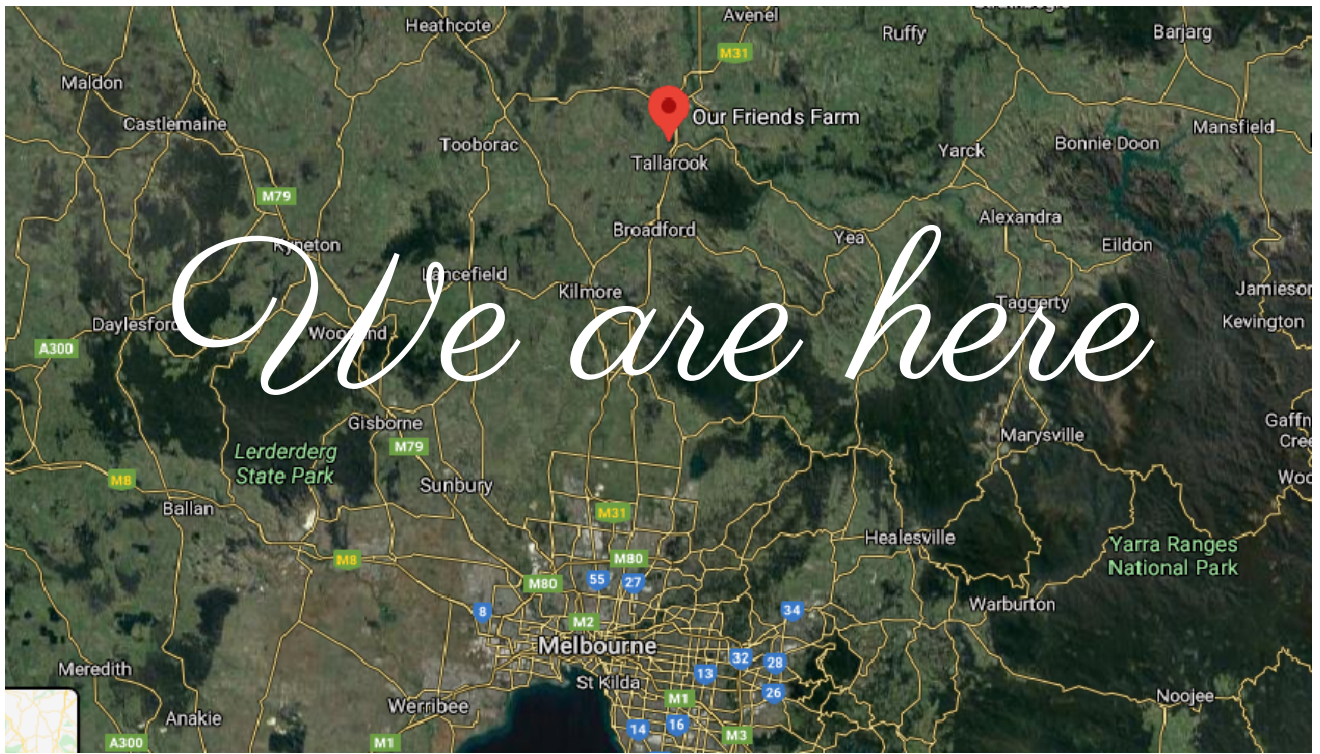
### *Non Alcoholic*

Coke, lemonade, soda, tonic, juice, tea, coffee, water

5 Hours \$25pp - 8 Hours \$40pp



OR YOU CAN RUN A TAB AT BAR PRICES



# TERMS & CONDITIONS

## Deposit

To secure your booking, a deposit of 25% of the event costs is required along with written confirmation. Where confirmation and deposit have not been received, the booking shall be released.

Bookings accepted three months or less prior to event date require written confirmation and a deposit of 50% of total estimated costs. A booking is not considered confirmed unless the deposit has been paid in full and venue hire contract is signed. This deposit will be deducted from the final invoice.

## Payment

The final invoice is to be paid no later than seven days prior to the date of the function and will be based on the guest count given fourteen days prior to the function. Should guest attendance increase after this date charges will be adjusted accordingly. Should guest numbers decrease after this date payment will still stand based on numbers provided fourteen days prior.

For those choosing to stay with us, incidentals are to be paid at check out. All other incidental charges are to be paid within 24 hours of receipt of invoice.

## Public Holiday Surcharge

A surcharge of 20% will be applied to all events taking place on a public holiday.

## Payment Options

Please note EFT transactions and direct debit do not incur surcharge. All credit card transactions incur a 2.5% fee.

## Cancellations

Cancellations are to be given in writing. If the booking is cancelled outside of six months of the function, an administration fee of \$2500.00 is applicable.

Between three and six months - cancellations will incur a charge of 50% of the deposit stipulated.

Within three months - cancellations will incur a charge of 100% of the deposit stipulated.

Within 30 days - cancellations will incur a charge of 100% of the function value stipulated.

## Tentative Booking

No obligation tentative bookings are held for 14 days. Our Friends Farm reserves the right to release the date if we have not heard from you within 14 days of the original booking.

## Minimum Spend

Friday: \$10,000      Saturday: \$10,000      Sunday: \$15,000

All other days minimum number is \$5000.

## Number of Guests

Final numbers are required fourteen working days prior to the function; otherwise the last confirmed numbers will be used to calculate final payment.

## Duration and Timing

Lunch time receptions are for a standard 5 hour duration and must conclude no later than 4pm. Evening receptions are for a standard 8 hour duration and must conclude by no later than 1am.

Extensions may be granted where there is availability to do so.. Liquor licensing prohibits the service of alcohol beyond 1.00am. The function rooms must be vacated within 30 minutes of conclusion of the function to avoid further costs ( \$200 per hour).

Where a function commences before 4pm, there is not guarantee that members of the general public will be off the farm grounds.

## Price Increase

The prices listed, whilst current at the time of quotation, are subject to change effective from the 1st of July each year.

A 20% surcharge is applicable for any function held on a public holiday.

## Insurance

Our Friends Farm will not accept responsibility for any loss or damage of personal items left on the premises before, during or after the function.

## Damage

Clients are financially responsible for any damage sustained to the property during their function.

## Display & Signage

Items are not to be nailed, screwed, adhered or stapled on to any parts of the building. Styling ideas must be approved by the venues' management.

## Confetti

A cleaning fee of \$100 will apply if confetti or other similar material is required to be removed.

